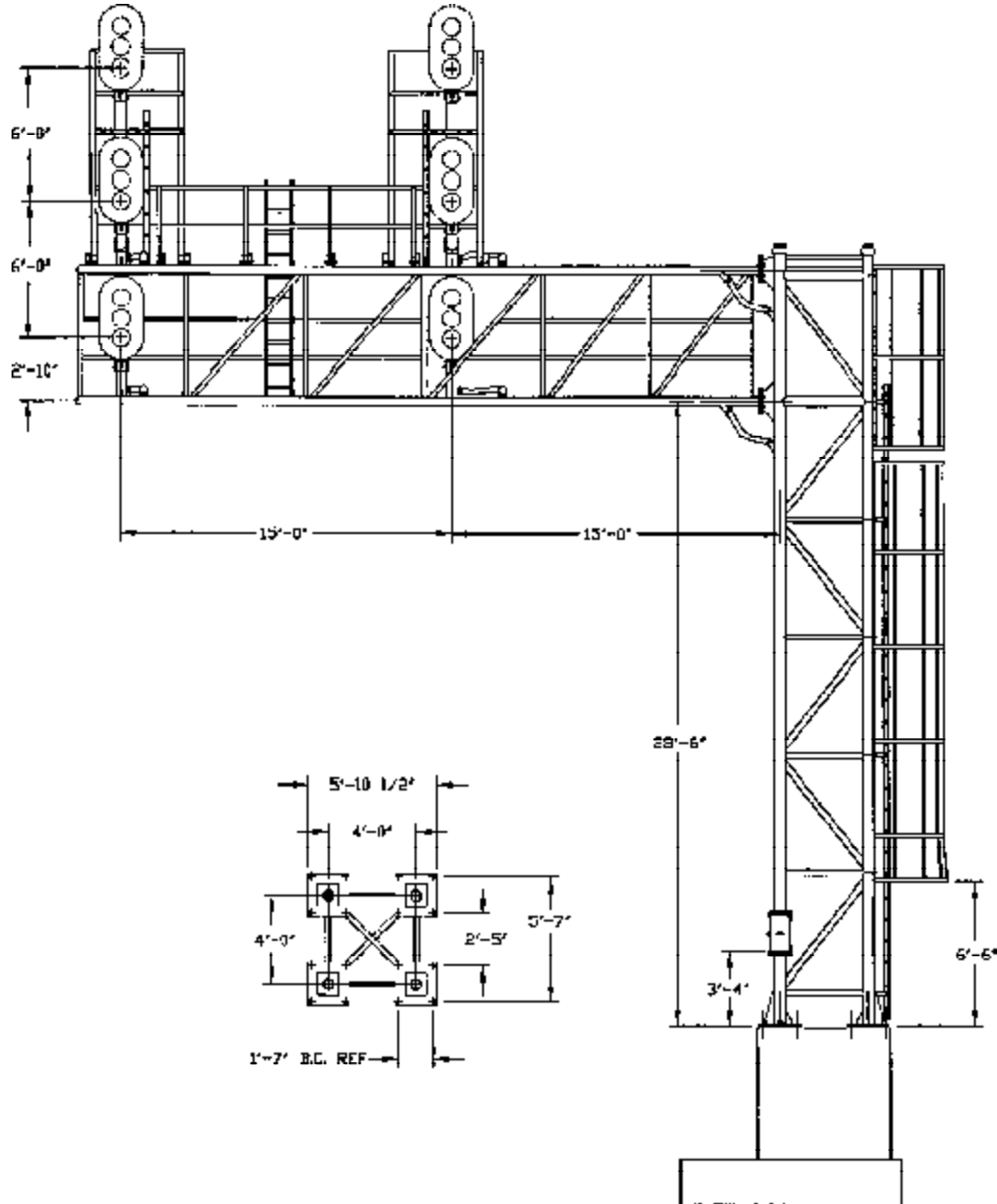


# Safetran

## WAYSIDE SIGNAL CANTILEVER MODEL QNR



Safetran's Model QNR Wayside Signal Cantilever is an all aluminum four masted tower structure with walkway type arm which meets or exceeds all applicable AREMA and AASHO specifications. The QNR is designed to support both wayside and highway crossing signals. It is constructed of heavy plates and pipe that are welded or bolted together. No stress bearing castings are used. The walkway is made of extruded aluminum to provide good footing, minimize wind load, and to prevent ice/snow buildup.

The QNR is recommended where clearance is in excess of 17 feet or where extra heavy signal loading is required. The maximum vertical clearance is 30 feet and the maximum length of arm is 45 feet under full load. Engineering services are available for greater heights and lengths.

## ORDERING INFORMATION

To order, specify the following.

1. Model QNR Wayside Signal Cantilever
  2. Length of Arm (Measured from the center of foundation to end of arm).
  3. Clearance of Arm above top of foundation.
  4. Location, type and quantity of wayside or highway crossing signals to be mounted on arm.
-