



**Specification for Type ST Plug-in Relay
Code Responsive Relay
2NR Contacts, 22/22Ohm**

Characteristic		Original Requirements	Contact/Coil Arrangement	
Coils	Nominal V or I	10 VDC	<p align="center">(Front of Relay)</p>	
	Resistance/Tolerance	22 Ohms ± 5% each coil		
Temperature Range		-40C (-40F) to 85C (185F)		
Normal & Reverse P.U/W.C.	Voltage	4.0-5.1 Volts Maximum		
	Current	19-23 Milliamps (ea. coil)		
	Speed	Pickup		Regular
Contacts	Arrangement	2NR		<p align="center">Relay Register</p> <p align="center">(Rear of Relay)</p>
	Rating	4 Amps/30 Volts		
	Material	Silver Platinum - 1/4" Diameter		
	Contact Resistance	.020 Ohms Maximum		
	Dynamic Gap	.020" Minimum		
	Contact Gap	.015" Minimum		
	Pressure	N. 35-70 Grams R. 35-70 Grams		
	Overtravel per Adjustment "6"	.024" Min. - .027" Max.		
	Resistance	N.O.	90 milliohms Maximum @ 10 VDC, 1.0 Amps	
		N.C.	30 Milliohms Maximum @ 10 VDC, 1.0 Amps	
Armature Travel		.060" Minimum		
Residual Gap		Adjust- .010" Minimum Fixed- Flush to .001" Above		
Center Gap		.010" Minimum		
Stop Pin (Fixed)		.002" - .004" Minimum		

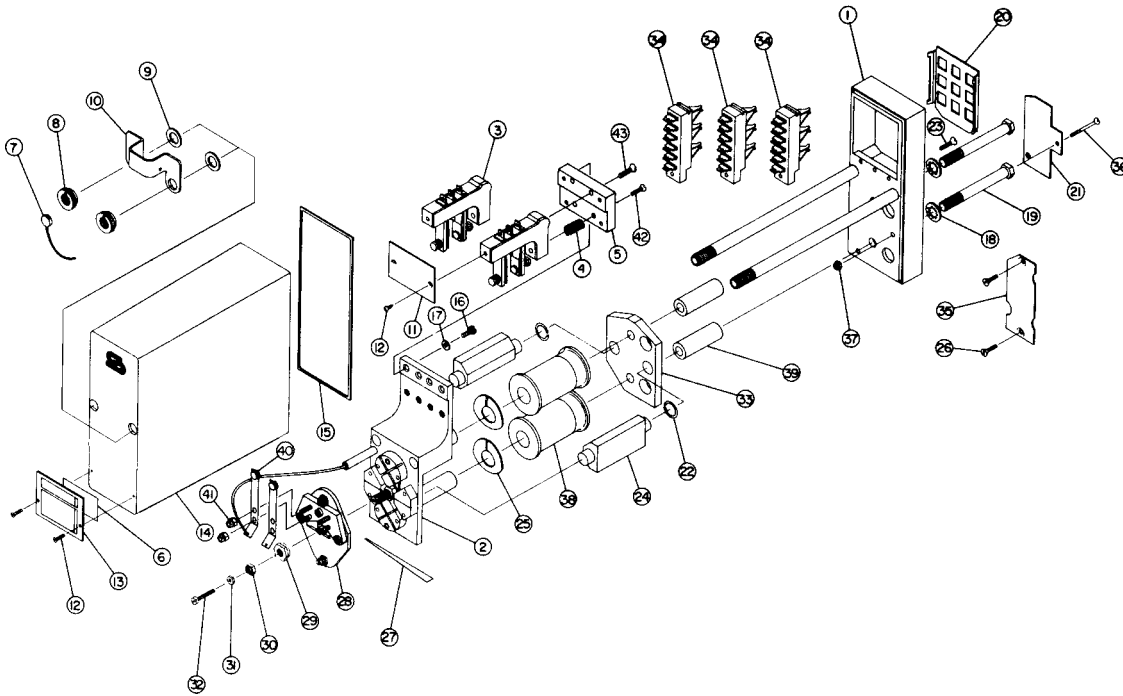
Field Requirements

Drop Away Value - Not less than 70% of original marking.
Pickup/Working Value - Not greater than 110% of original marking.

Shop Requirements

Drop Away Value - Not less than 95% of original marking.
Pickup/Working Value - Not greater than 105% of original marking.

Type ST Plug-in Relay Assembly and Replacement Parts Part Number 400952



To order, specify description and part number.

Item No.	Description	Qty. Req'd.	Part Number	Item No.	Description	Qty. Req'd.	Part Number
1	Base Assembly	1	420050-4X	23	Machine Screw, Flat Head, #6-32 X .531"	3	420050-36
2	Frame Assembly w/Cores & Pole PCS	1	420053-52X	24	Magnet, Alnico	2	420053-123
3	Contact Stack	2	420052-25X	25	Washer, Spring	2	420053-124
4	Compression Spring	2	420053-114	26	Machine Screw, Flat Head, #6-32 X .5"	2	420050-36
5	Block, Spacer	1	420054-27	27	Hinge Plate	1	420053-125
6	Label, Paper Identification	1	420053-116	28	Armature Assembly w/Pusher	1	420054-24
7	Seal, Lead	1	420050-8	29	Nut, Hex, #1/4 - 40 X .500"	1	420053-127
8	Nut, Knurl, Locking	2	420050-5	30	Nut, Hex, #1/4 - 40 X .312"	1	420053-128
9	Washer, Flat Rubber	2	420050-7	31	Nut, Hex, #6 - 32 X .250"	1	420053-129
10	Bracket, Cover	1	420050-4	32	Screw, #6 - 32 X .750"	1	420053-130
11	Name Plate	1	420053-147	33	Base Plate	1	420053-131
12	Phillips Screw, Pan Head, #4-40 X .187"	2	420053-18	34	Terminal Strip	3	420053-132
13	Cover, Nameplate	1	420050-2	35	Code Pin Plate 1-3-9-25	1	420050-134
14	Molded Cover, Clear	1	420050	36	Screw, Flat Head #8 - 32 X 1.185"	1	420053-88
15	Gasket, Cover	1	420050-1	37	Nut, Hex, #8 - 32 X .345"	1	420053-8
16	Screw, #6 -40 X .562"	4	420053-118	38	Coil 22 Ohms	2	420051-89X
17	Lock Washer	4	420053-115	39	Standoff	2	420053-133
18	Lock Washer, 5/16"	2	420053-13	40	Contact Arm Assembly	2	420054-25
19	Bolt, 5/16 - 24 X 2.75"	2	420053-120	41	Nut, Hex, #6 - 40 X .312"	4	420054-26
20	Seal, Dust	1	420052	42	Screw, #6 - 40 X .750" F.H.	2	420054-28
21	Plate, Code	1	420050-549	43	Screw, #6 - 40 X .969" F.H.	2	420054-29
22	Washer, .450 X .064"	2	420053-122				

Safetran Systems Corporation
2400 Nelson Miller Parkway
Louisville, Kentucky 40223
502-244-7400